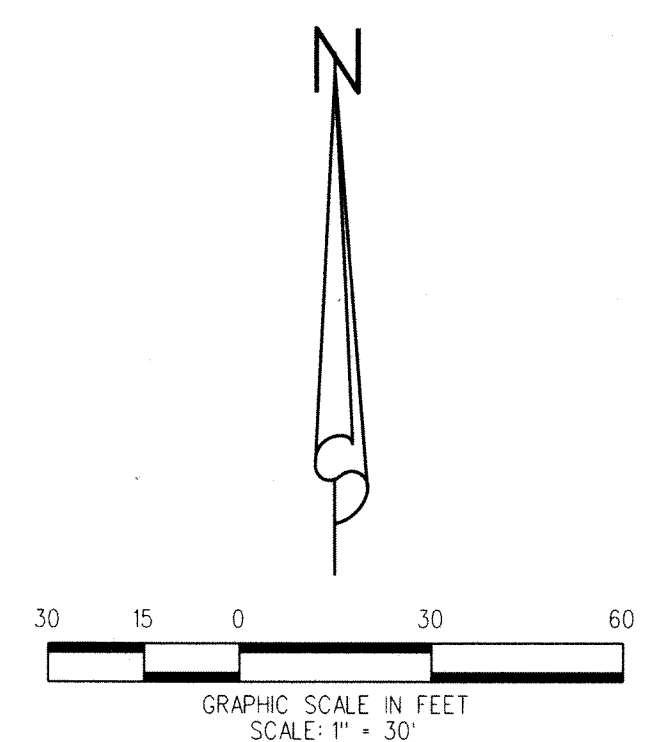
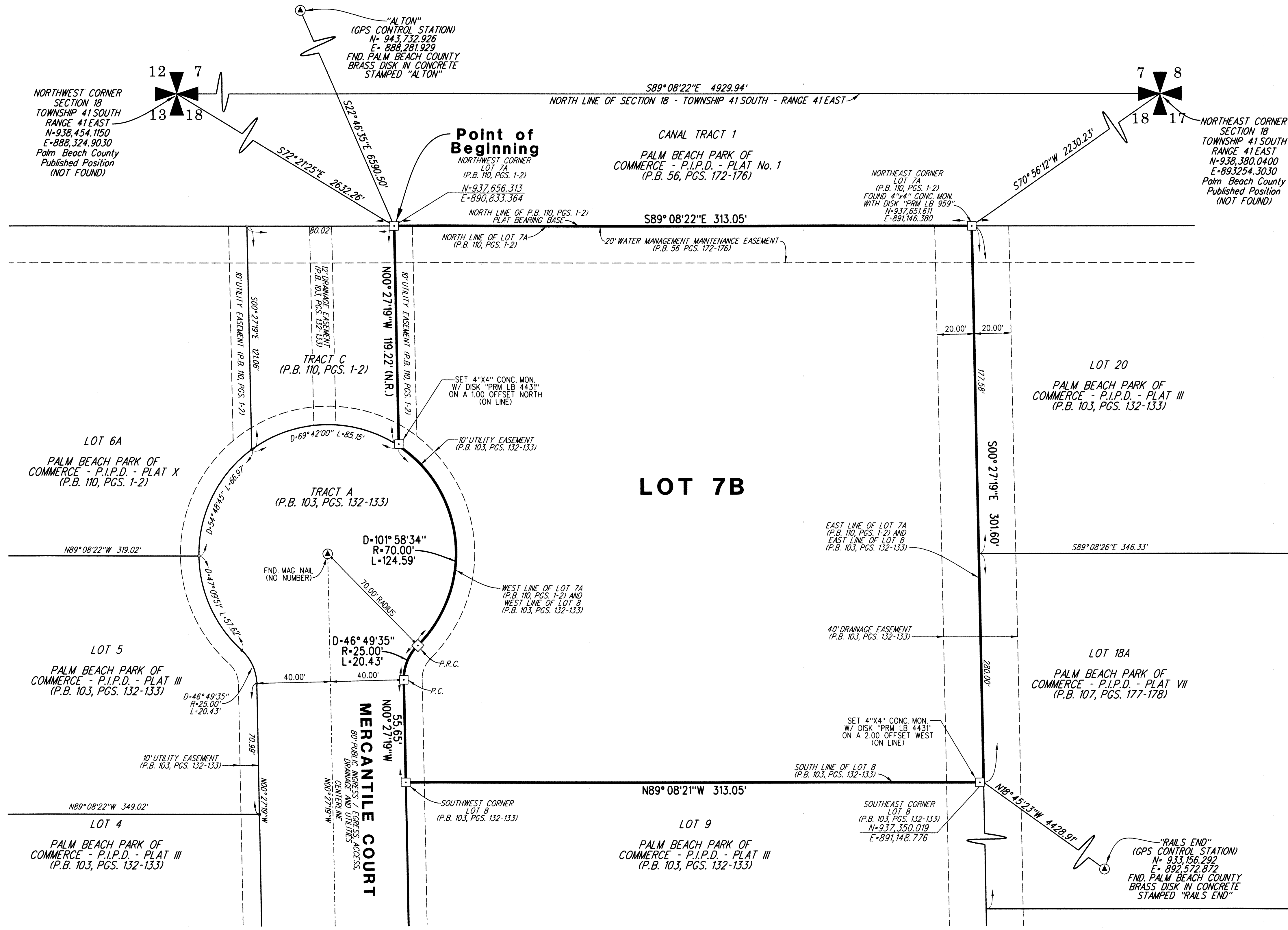


PALM BEACH PARK OF COMMERCE, P.I.P.D. - PLAT 16

BEING A REPLAT OF LOT 7A, AS SHOWN ON PALM BEACH PARK OF COMMERCE, P.I.P.D. - PLAT X,
RECORDED IN PLAT BOOK 110, PAGES 1 THROUGH 2
AND A REPLAT OF LOT 8, AS SHOWN ON PALM BEACH PARK OF COMMERCE, P.I.P.D. - PLAT III,
RECORDED IN PLAT BOOK 103, PAGES 132 THROUGH 133
PUBLIC RECORDS OF PALM BEACH COUNTY, FLORIDA
LYING IN SECTION 18, TOWNSHIP 41 SOUTH, RANGE 41 EAST, PALM BEACH COUNTY, FLORIDA

173

SHEET 2 OF 2



LEGEND:
 [Symbol] = SET 4"x4" CONCRETE MONUMENT WITH DISK STAMPED "PRM LB 4431" PERMANENT REFERENCE MONUMENT (P.R.M.), UNLESS OTHERWISE NOTED

ABBREVIATIONS:
 CONC. = CONCRETE
 D = DELTA ANGLE
 FND. = FOUND
 L = LENGTH
 MON. = MONUMENT
 N/K/A = NOW KNOWN AS
 N.R. = NOT RADIAL
 O.R.B. = OFFICIAL RECORD BOOK
 P.B. = PLAT BOOK
 P.C. = POINT OF CURVATURE
 P.I.P.D. = PLANNED INDUSTRIAL PARK DISTRICT
 P.R.C. = POINT OF REVERSE CURVATURE
 P.R.M. = PERMANENT REFERENCE MONUMENT
 P.S.M. = PROFESSIONAL SURVEYOR AND MAPPER
 PG. = PAGE
 PGS. = PAGES
 R = RADIUS
 R/W = RIGHT OF WAY
 W/ = WITH

PLAT POSITION AND ORIENTATION:

- COORDINATES SHOWN HEREON ARE GRID AND ARE BASED ON THE NATIONAL GEODETIC SURVEY, FLORIDA STATE PLANE TRANSVERSE MERCATOR PROJECTION.
- ALL DISTANCES SHOWN HEREON ARE GROUND DISTANCES
- DATUM = NORTH AMERICAN DATUM OF 1983 (NAD83), 1990 ADJUSTMENT
- ZONE = FLORIDA EAST
- LINEAR UNITS = US SURVEY FOOT
- SCALE FACTOR = 1.000004284
- GROUND DISTANCES X SCALE FACTOR = GRID DISTANCE

SITE DATA:
CONTROL No. 1981-00190

LIDBERG LAND SURVEYING, INC.
 675 West Indiantown Road, Suite 200,
 Jupiter, Florida 33458 TEL. 561-746-8454

CAD:	K:\JUST \ 184141 \ 110-01 \ 14-041A-306 \ 14-041A-306.DGN		
REF.			
FLD.	FB.	PG.	JOB 14-041A-306
OFF. CASASUS			DATE MAY 2018
CKD. D.C.L.	SHEET 2	OF 2	DWG. 014-041P